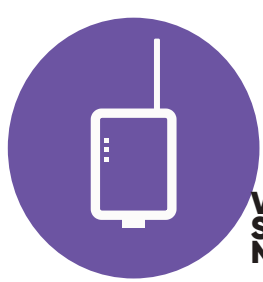


MODULE SF485

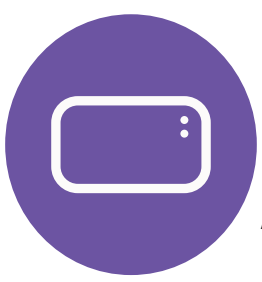
Designed to work with TRIKDIS communicators



When popular transmission to CMS not safe enough



VIA SIGFOX NETWORK



FOR ANY ALARM PANEL



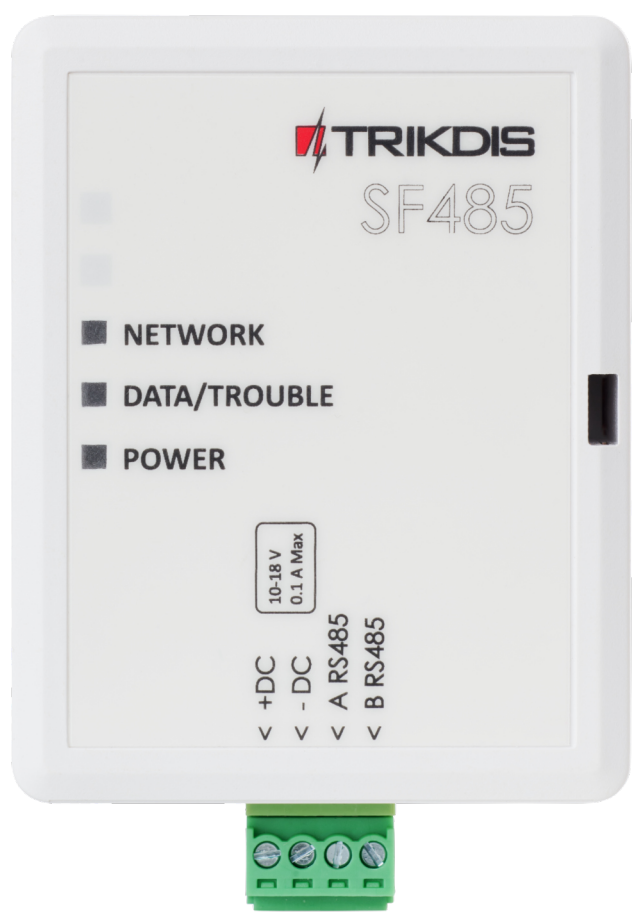
WITH TRIKDIS COMMUNICATOR

SF485 works as a secondary channel for security panel events transmission to Central Monitoring Station (CMS) or Protegus mobile app when the primary channel fails.

No settings required

Contact ID events

RS485 interface



Parameter	Description
Power supply voltage	10-18 V DC
Current consumption	Up to 15 mA (stand by) Up to 60 mA (short-term, transmitting)
Network	Sigfox
Region	RC1
Device uplink radiation class	0U*
Sigfox ready certificate	P_01B8_6C72_01
Event reporting protocol	Contact ID
Interface	RS485
Protection class	IP20
Operating environment	Temperature from -10 °C to +50 °C, relative humidity 80% at +20 °C, no condensation
Dimensions	92 x 62 x 26 mm
Weight	70 g



WORKS WITH
protequs
intelligent security & control

